



## Safing for Curtain Wall

# General Product Information

ROCKWOOL stone wool products are made of basalt, a volcanic stone.

ROCKWOOL RockSafe products are specially developed to provide fire protection to the systems they are applied to. They are manufactured from long fine fibres, spun from molten natural rock, bonded with thermosetting resin. The products are asbestos free. The uniquely formulated contents in the product makes it slightly greyish in colour, ensuring stability of the fibre structures and provides a rigid surface when exposed directly to heat during a fire. The products have remarkable resistance to shrinkage at temperatures encountered in fire conditions.

### Common applications

RockSafe products are developed to be used as a fire protection to curtain wall applications. The key application is in sealing of any openings in non-visible areas such as those between the curtain wall and the perimeter edge of the floor slab. This can prevent fire spread and maintained the fire compartment on each floor of the building in an event of fire.

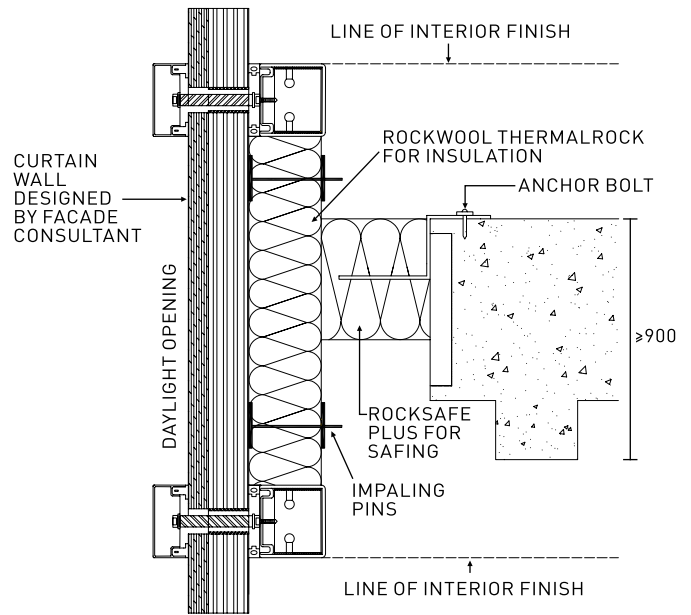
# Safing for Curtain Wall

## Basic installation guideline

RockSafe products are lightweight and easy to handle. Galvanized steel Z- brackets are inserted into the mid thickness of the slab, at every 500mm length, at the centre of the slab. Then the slabs are compressed and inserted into the safing opening. Secure the galvanized Z-bracket to the floor slab with anchor fixing. Rocksafes are pre-laminated at non-fire side and to be seal off with aluminium tape at all joint in order to meet the requirement of smoke tightness.

## Fire performance

RockSafe has been subjected to fire resistance test in accordance to BS476 Part 20, in accredited laboratory and achieved two hours fire rating, meeting the integrity and insulation criteria. In this fire test, RockSafe Plus of 135mm thickness has been compressed to at least 15% of its total width and fitted into the various openings of the concrete floor slab. Further assessment has been obtained for its usage in safing application for curtain wall. Please refer to your local authority for applicable approvals required on this product.



Sectional view of RockSafe at perimeter edge of curtain wall

## Technical Parameters

Properties	RockSafe Plus	Standards
Dimensions:		
Thickness	135mm	EN823
Length & Width	1200mm x 600mm	EN822
Density	80kg/m <sup>3</sup>	EN826
Thermal Conductivity at 20°C	0.035W/mK	ASTM C518
Melting Point	= > 1000°C	DIN4102-17
Fire Performance	Non-combustible 2 hours fire rating*	BS476 Part 4 BS476 Part 20
Water Absorption (partial immersion)	Less than 0.5kg/m <sup>2</sup>	EN1609:97
Water Vapour Absorption	Absorb < 0.04%Vol	ASTM C1104/1104M
Health & Safety:		
Odour Emission	No perceptible odour present	ASTM C665-06
Fungi Resistance	Does not encourage growth of fungi	ASTM 1338

\* Please refer to your ROCKWOOL sales representative for the local authority's required approvals