

ProRox
Industrial Insulation

Product Catalogue

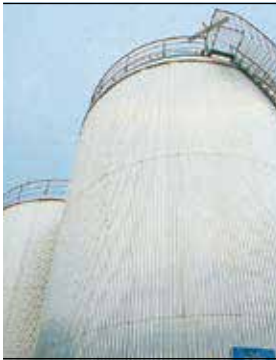
General Product Information

ROCKWOOL stone wool products are made of basalt, a volcanic stone.

ROCKWOOL stone wool products are non-combustible with a melting point of approximately 1000°C. They are particularly suitable for thermal insulation, fire protection and sound reduction/absorption.

ROCKWOOL stone wool is inorganic and contains no nutritious substance. Therefore it will not be attacked by microorganisms. Stone wool will not rot and does not attract vermin.

No CFCs, HFCs, HCFCs or asbestos are used in the manufacture of ROCKWOOL stone wool products.



Applications

ProRox SL 930^{SA} is a semi rigid stone wool slab. A one-sided facing with fibreglass reinforced aluminium foil (Alu) or glass tissue is available upon request.

Compliance

ProRox SL 930^{SA} Slabs comply with the requirements as set by internationally recognized standards like CINI 2.2.01 and ASTM C612 Type IA and IB and II.

Advantages

- Available in a wide range of thicknesses
- Semi-rigid product combined with aluminium foil or fibreglass coating provides a smart, smooth surface finish

Product properties

	Performance						Standard
	Mean Temp [°C]	50	100	150	200	250	
Thermal Conductivity	λ (W/mK)	0.039	0.047	0.054	0.064	0.075	ASTM C177
Nominal Density	60 kg/m ³						EN 1602
Maximum Service Temperature	450°C						ASTM C411/C447
Linear Shrinkage	Less than 2% (at max service temperature)						ASTM C356
Reaction to Fire	EuroClass A1						EN 13501-1 ASTM E84
	Surface burning characteristics; Flame spread = passed, Smoke development = passed						
pH	pH 7-12.5						ASTM C871
Chloride Content	Less than 10 ppm						ASTM C871 ASTM C692/C871
	Conforms to the stainless steel corrosion specification as per ASTM C795						
Moisture Absorption	Less than 1% weight						ASTM C1104/C1104M
Water Absorption	Less than 1 kg/m ²						EN 1609

Installation guidelines

- Mechanically fix ProRox SL 930^{SA} using self-adhesive or welded pins. Due to the rigidity of the product, it can also be mounted in cassettes.
- In the case of aluminium foil facing, finish lengthwise and crosswise joints with a self-adhesive aluminium tape (≥75 mm). When

insulating objects colder than the ambient temperature, where there is a risk of condensation, the insulation should be provided with a vapour barrier. The insulation should be finished with a metal (e.g. aluminium), watertight covering.

■ Distribution by



บริษัท ทีโอพี อินซูลेशन แอนด์เทรดดิ้ง จำกัด

7/1 ซอยเพชรเกษม 108 แขวง 9 กองช่างพลู ของบวม ถนน. 10160

T. 02 808 2147-9

M. 086 785 9255



Applications

ProRox SL 950^{SA} is a strong, rigid slab, specially developed for the thermal and acoustic insulation of boilers, columns and vessels up to intermediate temperatures.

Compliance

ProRox SL 950^{SA} Slabs comply with the requirements as set by internationally recognized standards like CINI 2.2.01 and ASTM C612 Type IA, II, III and IVA.

Advantages

- Suitable up to intermediate temperatures
- Retains shape
- Available in a wide range of thicknesses

Product properties

	Performance							Standard
	Mean Temp (°C)	50	100	150	200	250	300	
Thermal Conductivity	λ (W/mK)	0.038	0.046	0.053	0.062	0.072	0.081	ASTM C177
Nominal Density	80 kg/m ³							EN 1602
Maximum Service Temperature	650°C							ASTM C411/C447
Linear Shrinkage	Less than 2% (at max service temperature)							ASTM C356
Reaction to Fire	EuroClass A1 Surface burning characteristics; Flame spread=passed, Smoke development=passed							EN 13501-1 ASTM E84
pH	pH 7-12.5							ASTM C871
Chloride Content	Less than 10 ppm Conforms to the stainless steel corrosion specification as per ASTM C795							ASTM C871 ASTM C692/C871
Moisture Absorption	Less than 1% weight							ASTM C1104/C1104M
Water Absorption	Less than 1 kg/m ²							EN 1609

■ Distribution by



บริษัท ทีโอพี อินซูลेशन แอนด์เทรดดิ้ง จำกัด

7/1 ซอยเพชรเกษม 108 แขวง 9 หนองค้างพูล หนองแขม กทม. 10160

T. 02 808 2147-9

M. 086 785 9255



Applications

ProRox SL 960^{SA} is a strong and rigid slab and is especially suitable for the thermal and acoustic insulation of constructions up to intermediate temperatures.

Compliance

ProRox SL 960^{SA} Slabs comply with the requirements as set by internationally recognized standards like CINI 2.2.01 and ASTM C612 Type IA, II, III, IVA and IVB.

Advantages

- Excellent thermal and acoustic insulation
- Resistant to high temperatures

Product properties

	Performance							Standard
	Mean Temp [°C]	50	100	150	200	250	300	
Thermal Conductivity	λ (W/mK)	0.038	0.044	0.050	0.057	0.065	0.075	ASTM C177
Nominal Density	100 kg/m ³							EN 1602
Maximum Service Temperature	650°C							ASTM C411/C447
Linear Shrinkage	Less than 2% (at max service temperature)							ASTM C356
Reaction to Fire	EuroClass A1							EN 13501-1 ASTM E84
	Surface burning characteristics; Flame spread = passed, Smoke development = passed							
pH	pH 7-12.5							ASTM C871
Chloride Content	Less than 10 ppm							ASTM C871 ASTM C692/C871
	Conforms to the stainless steel corrosion specification as per ASTM C795							
Moisture Absorption	Less than 1% weight							ASTM C1104/C1104M
Water Absorption	Less than 1 kg/m ²							EN 1609

■ Distribution by



บริษัท ทีโอพี อินซูลेशन แอนด์เทรดดิ้ง จำกัด

7/1 ซอยเพชรเกษม 108 แยก 9 กองช่างพลู กองแขม ถนน. 10160

T. 02 808 2147-9

M. 086 785 9255



Applications

ProRox SL970^{SA} is a strong and rigid stone wool slab, for the thermal and acoustic insulation of constructions where higher temperatures and light mechanical loads (e.g. vibrations) occur. Typical examples are ovens, furnaces and exhaust ducts.

Compliance

ProRox SL 970^{SA} Slabs comply with the requirements as set by internationally recognized standards like CINI 2.2.01 and ASTM C612 Type IA, II, III, IVA and IVB.

Advantages

- Suitable for high temperature application
- Retains shape
- Available in a wide range of thicknesses

Product properties

	Performance							Standard
	Mean Temp (°C)	50	100	150	200	250	300	
Thermal Conductivity*								ASTM C177
	λ (W/mK)	0.038	0.043	0.049	0.056	0.064	0.074	
Nominal Density	128 kg/m ³							EN 1602
Maximum Service Temperature	650°C							ASTM C411/C447
Linear Shrinkage	Less than 2% (at max service temperature)							ASTM C356
Reaction to Fire	EuroClass A1							EN 13501-1 ASTM E84
	Surface burning characteristics; Flame spread=passed, Smoke development=passed							
pH	pH 7-12.5							ASTM C871
Chloride Content	Less than 10 ppm							ASTM C871 ASTM C692/C871
	Conforms to the stainless steel corrosion specification as per ASTM C795							
Moisture Absorption	Less than 1% weight							ASTM C1104/C1104M
Water Absorption	Less than 1 kg/m ²							EN 1609

■ Distribution by

TOP
Insulation and Trading

บริษัท ทีโอพี อินซูลेशन แอนด์เทรดดิ้ง จำกัด

7/1 ซอยเพชรเกษม 108 แยก 9 กองค่างพลู ของแอม กทม. 10160

T. 02 808 2147-9

M. 086 785 9255